

QUALITY CONSTRUCTION
PARTNERS

Banyan Model

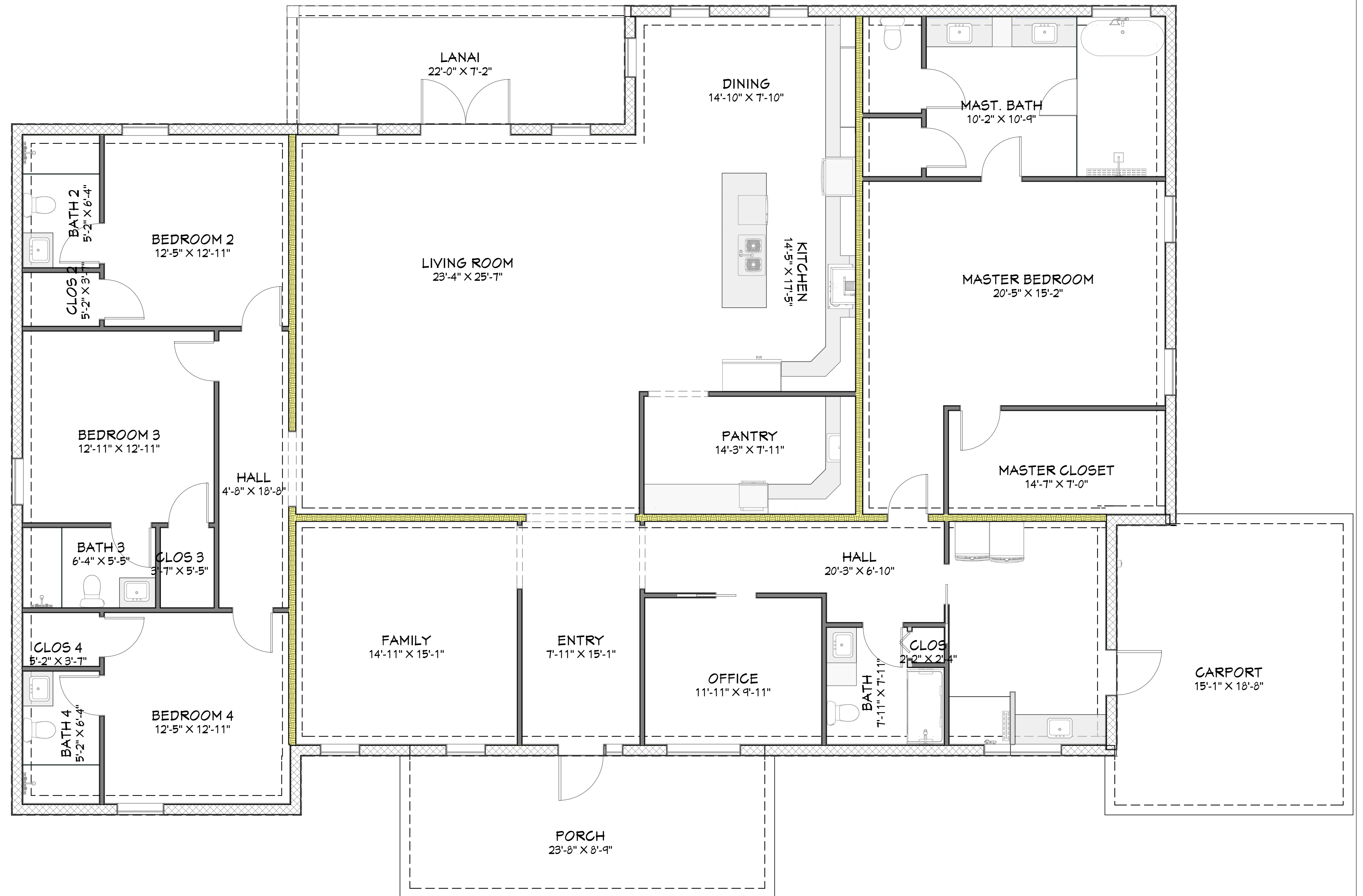
4442 SQFT Modern Elegance

Step into **The Banyan Model**, a stunning **4,442 sq. ft.** modern home designed for both comfort and sophistication. This **4-bedroom, 5-bathroom** masterpiece seamlessly blends contemporary aesthetics with functional living, making it perfect for families and entertainers alike.

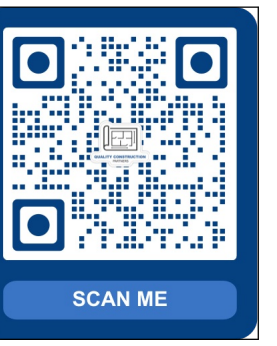
Key Features:

- **Spacious Layout:** With **4 large bedrooms** and **5 full bathrooms**, every member of the household enjoys their own private retreat.
- **Office Space:** A dedicated home office, perfect for remote work or study.
- **Separate Family/Entertainment Room:** An additional family room offers a cozy retreat for relaxation, movie nights, or entertainment.
- **Expansive Walk-In Pantry:** A chef's dream with custom shelving, cabinetry, and extra prep space.
- **Modern Kitchen & Open Concept Living:** A stunning kitchen featuring sleek cabinetry, high-end appliances, and a stylish island, flowing seamlessly into the open living and dining areas.
- **Carport Convenience:** A well-designed **covered carport** provides easy access and added functionality.
- **Elegant Outdoor Lanai:** Enjoy outdoor living with a covered lanai, perfect for entertaining or unwinding in a private backyard oasis.

The Banyan Model offers a perfect balance of **luxury, practicality, and modern design**, making it an exceptional choice for those seeking a high-end, spacious home.



FLOOR PLAN VIEW SHELL
1/4 IN = 1 FT



Banyan Model

DRAWINGS PROVIDED BY:
Quality Construction Partners LLC

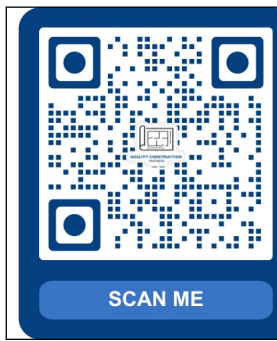
DATE:

3/31/2025

SCALE:

SHEET:

P-1



The Banyan Model – Key Features

General Specs
Total Area: 4,442 sq. ft.
Bedrooms: 4
Bathrooms: 5
Office Space for work or study
Separate Family/Entertainment Room

Interior Features
Open-Concept Living Room & Kitchen
High-End Kitchen with Large Island
Expansive Walk-In Pantry with custom shelving and additional workspace
Spacious Master Suite with a large walk-in closet and luxury en-suite bath
Each Bedroom Features Its Own Bathroom for privacy and convenience
Dedicated Laundry Room

Exterior Features
Covered Carport for convenient parking
Elegant Front Porch for curb appeal and welcoming entry
Large Covered Lanai for outdoor entertaining and relaxation

Banyan Model

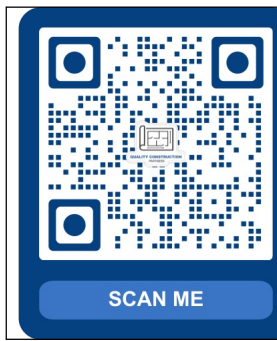
DRAWINGS PROVIDED BY:
Quality Construction Partners LLC

DATE:

3/31/2025

SCALE:

SHEET:



Banyan Model – Exterior Description

The Banyan Model boasts a modern yet timeless exterior, featuring a sleek, low-pitched roofline, crisp white stucco walls, and elegant stone-accented columns. The covered front porch welcomes guests with a grand yet inviting presence, while the spacious carport provides both convenience and functionality. Large black-framed windows enhance natural light and add to the home's contemporary charm. A covered lanai at the rear offers a perfect outdoor retreat, seamlessly blending indoor and outdoor living. Designed for both curb appeal and practicality, this home embodies sophistication with a modern touch.



Large, **sleek black-framed windows** not only enhance the home's contemporary appeal but also allow for abundant natural light, seamlessly integrating indoor and outdoor spaces. The **spacious carport**, supported by matching stone pillars, offers convenient covered parking while maintaining the home's streamlined design. At the rear, a **covered lanai** provides the perfect retreat for relaxation or entertaining, effortlessly extending the living space into the outdoors. The symmetrical layout, combined with thoughtfully placed landscaping, adds to the home's curb appeal while maintaining a **modern, minimalist elegance**.

Banyan Model

DRAWINGS PROVIDED BY:
Quality Construction Partners LLC

DATE:

3/31/2025

SCALE:

SHEET:



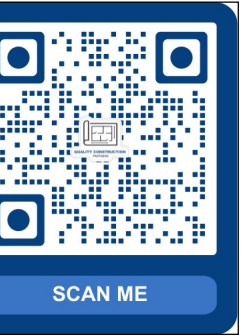
Banyan Model – Interior Description

The **Banyan Model** offers a **spacious and thoughtfully designed interior**, blending modern aesthetics with functional living. The **open-concept layout** creates a seamless flow between the living, dining, and kitchen areas, making it perfect for both everyday living and entertaining.

The **kitchen** features custom two-tone cabinetry, high-end appliances, a large center island, and a walk-in pantry with ample storage and prep space. Light wood flooring throughout enhances the home's warmth, while large windows allow for an abundance of natural light.

The home includes **four well-sized bedrooms**, each with access to a private or nearby bathroom, ensuring comfort and privacy for all residents. The **master suite** is a true retreat, complete with a luxurious en-suite bath and an oversized walk-in closet. A **dedicated office space** and a **separate family/entertainment room** add flexibility to suit various lifestyle needs.

Designed with **modern elegance and practicality in mind**, the **Banyan Model** offers an inviting and stylish living experience.



Banyan Model

DRAWINGS PROVIDED BY:
Quality Construction Partners LLC

DATE:

3/31/2025

SCALE:

SHEET: