

ALLEE MODEL

MODERN LIVING WITH NEXT-GEN COMFORT!

PRICED AT \$509,999

Welcome to the **Allee Model**, a beautifully designed **4-bedroom, 3-bathroom** home featuring a dedicated **Next-Gen Suite** for multi-generational living or rental potential. With **2,523 sq. ft.**, this home offers a spacious open layout, premium finishes, and **impact windows** for safety and energy efficiency.

Key Features:

Impact Windows & Doors – Providing enhanced security, storm protection, and energy efficiency.

All Appliances Included – The kitchen comes fully equipped with stainless steel appliances, including a stove, refrigerator, microwave, and dishwasher.

2-Bed, 1-Bath Next-Gen Suite – A private in-home suite with its **own entrance, kitchenette, bathroom, laundry, and two bedrooms**, perfect for extended family or rental income.

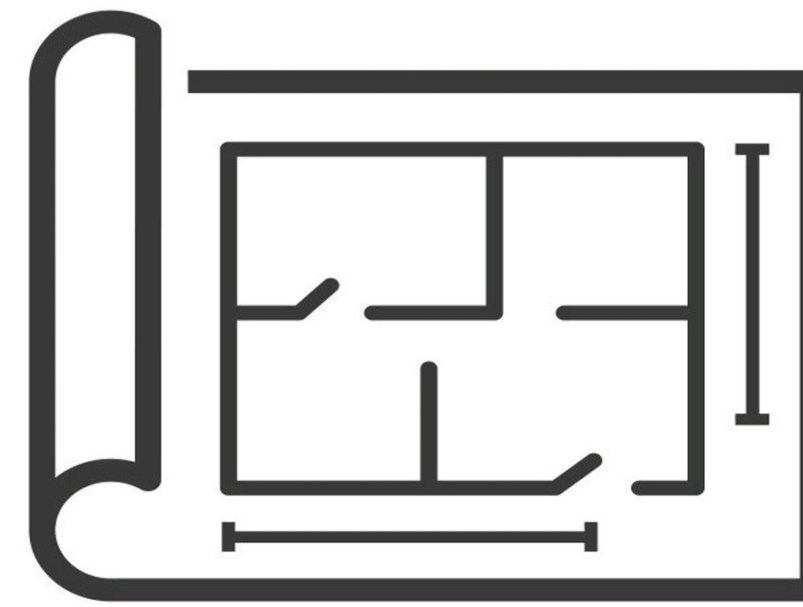
Spacious Kitchen – Modern two-tone cabinetry, quartz countertops, and a large island ideal for entertaining.

Elegant Interiors – Featuring wood-look flooring, stylish lighting, and high-quality finishes throughout.

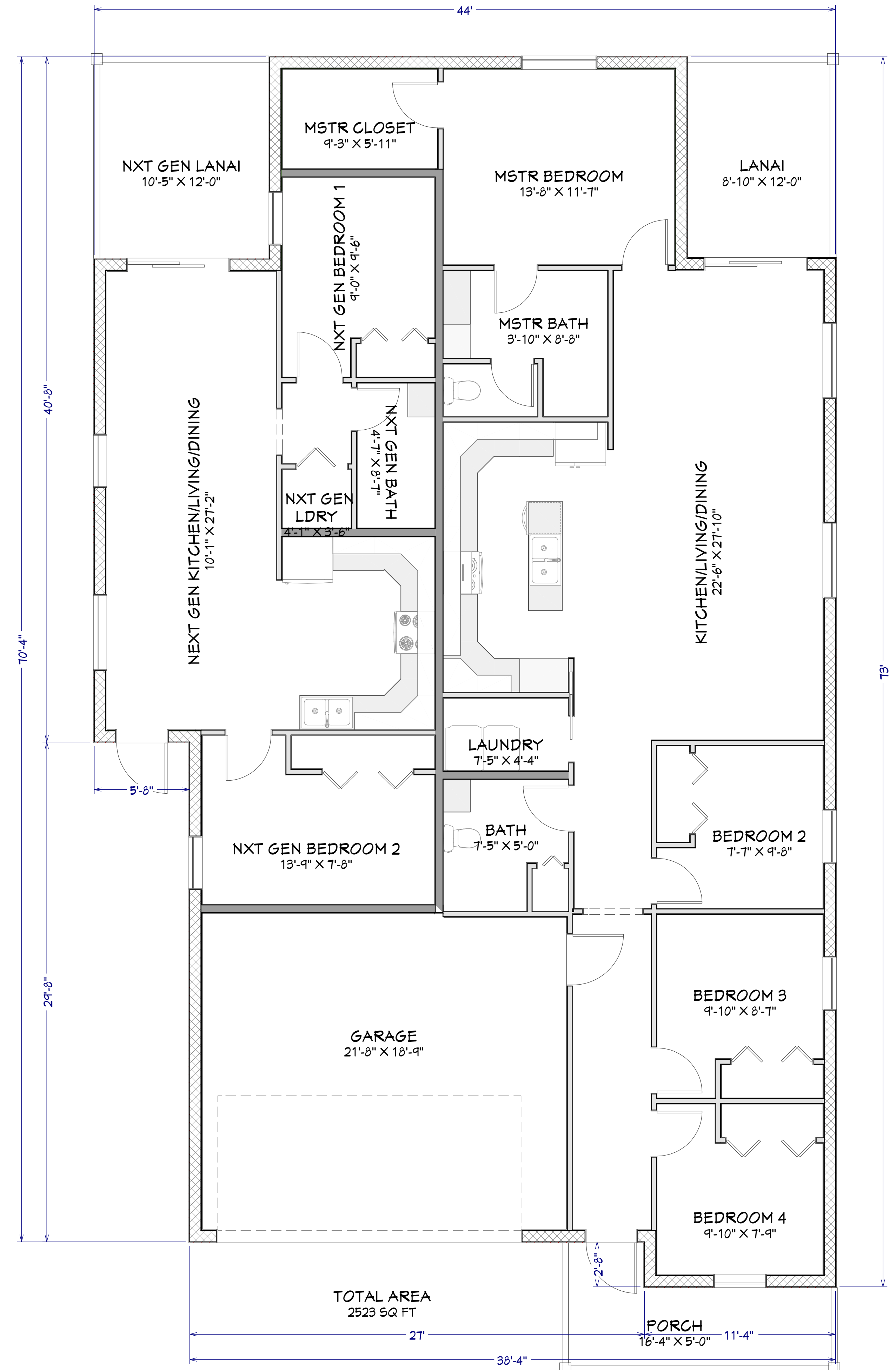
Master Retreat – A large master bedroom with a walk-in closet and a luxurious en-suite bathroom.

Outdoor Living – Covered **lanai** and private backyard space, perfect for relaxation and gatherings.

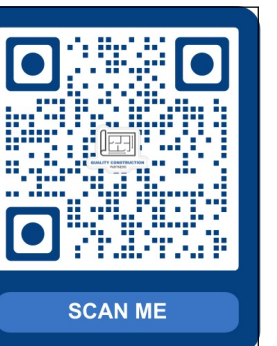
2-Car Garage – Ample parking and storage space.



QUALITY CONSTRUCTION PARTNERS



FLOOR PLAN VIEW SHELL
1/4 IN = 1 FT



Page: ALLEE Model Overview

ALLEE MODEL

DRAWINGS PROVIDED BY:
Quality Construction Partners LLC
Admin@qcpbuilders.com

DATE:

3/17/2025

SCALE:

SHEET:

P-1

Key Features of the Allee Model

The **Allee Model** is a stunning **4-bedroom, 3-bathroom** home with a thoughtfully designed **Next-Gen Suite**, offering a **spacious 2,523 sq. ft.** of modern living space. With **impact windows, all appliances included, and a stylish open-concept layout**, this home is perfect for **families, multi-generational living, or rental investment opportunities.**

Exterior Features:

Impact Windows & Doors – Enhanced security, energy efficiency, and storm protection.

Modern Curb Appeal – Sleek stucco and horizontal siding with a stylish covered entryway.

Spacious 2-Car Garage – Provides ample parking and storage space.

Professionally Designed Landscaping – Low-maintenance and visually appealing.

Large Backyard & Lanai – Ideal for outdoor gatherings and relaxation.

Interior Features:

Open-Concept Layout – Seamlessly connects the kitchen, dining, and living areas.

Wood-Look Flooring – Durable, stylish, and easy to maintain.

High Ceilings & Modern Finishes – Adds a spacious and luxurious feel.

Kitchen & Dining:

Fully Equipped Kitchen – Includes stainless steel **stove, refrigerator, microwave, and dishwasher.**

Stylish Two-Tone Cabinetry – Offers a sophisticated look with ample storage.

Quartz Countertops & Large Island – Perfect for meal prep and entertaining.

Pantry Storage – Keeps everything organized and within reach.

Bedrooms & Bathrooms:

Spacious Master Suite – Features a **walk-in closet and a private en-suite bathroom.**

Modern Bathrooms – Designed with sleek fixtures and premium finishes.

Three Additional Bedrooms – Ideal for family members, guests, or a home office.

Next-Gen Suite:

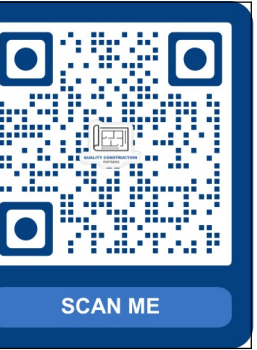
Private 2-Bedroom, 1-Bathroom Space – A separate living area within the home.

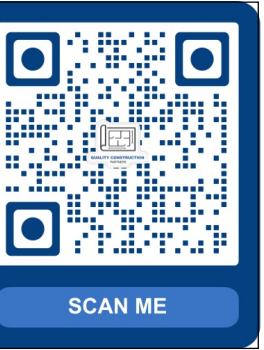
Private Entrance – Ensures independence and flexibility.

Kitchenette & Living Area – Includes cabinets, countertops, fridge, and stove.

Dedicated Laundry Room – Adds extra convenience for Next-Gen residents.

Outdoor Access – Sliding doors lead to a **private lanai.**



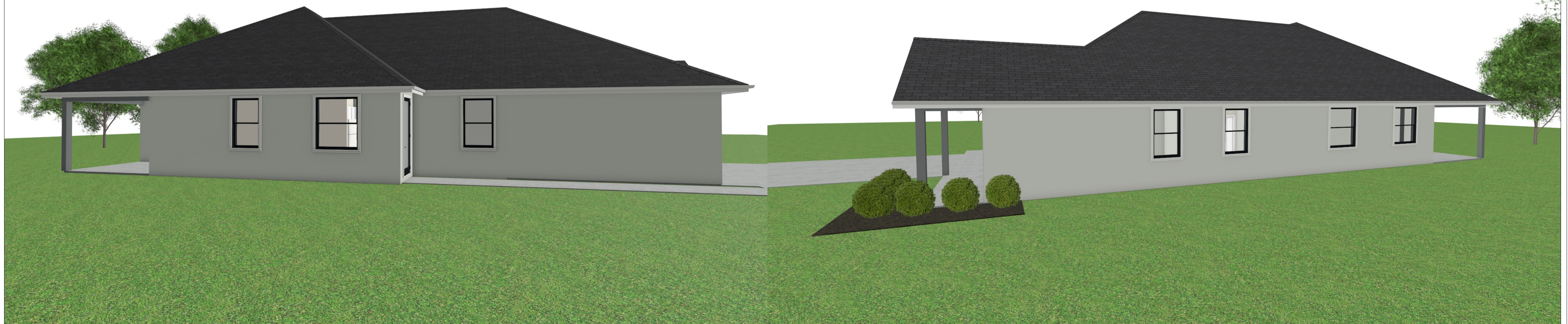


Stunning Exterior Design – Allee Model

The **Allee Model** boasts a **modern yet timeless** exterior, blending clean lines with stylish architectural details. Its **sleek, contemporary facade** features a combination of **smooth stucco and horizontal siding**, creating an elegant contrast. The **covered front porch**, supported by a bold, modern column, provides a welcoming entrance that enhances curb appeal.

Key exterior highlights include:

- ✓ **Impact Windows & Doors** – Offering superior storm protection, energy efficiency, and a sleek modern look with black trim accents.
- ✓ **Spacious 2-Car Garage** – Designed with a stylish panel door that complements the home's color scheme.
- ✓ **Durable Roofing** – A **high-quality, dark asphalt shingle roof** adds a classic touch while ensuring long-term protection.
- ✓ **Covered Entryway & Porch** – Providing a cozy and inviting front entrance with a clean, modern design.
- ✓ **Professionally Designed Landscaping** – Featuring lush greenery and low-maintenance shrubbery to enhance the home's aesthetic.
- ✓ **Large Backyard & Lanai** – A spacious outdoor area with a **covered lanai**, perfect for relaxing or entertaining.





Elegant Interior – Allee Model

Step inside the **Allee Model** and experience a **spacious, open-concept interior** designed for modern living. With **high-quality finishes, stylish details, and a functional layout**, this home offers a perfect balance of comfort and sophistication

🏠 Main Interior Features:

- ☑️ **Open-Concept Layout** – The seamless flow between the **kitchen, dining, and living areas** creates an inviting atmosphere perfect for gatherings and everyday living.
- ☑️ **Wood-Look Flooring** – Durable, stylish, and easy to maintain, adding warmth and elegance throughout the home.
- ☑️ **High Ceilings & Neutral Color Palette** – Enhances the sense of space and natural light, creating a bright and airy environment.
- ☑️ **Large Sliding Glass Doors** – Leading to the covered **lanai**, allowing for effortless indoor-outdoor living.

🍳 Gourmet Kitchen:

- ☑️ **Modern Two-Tone Cabinetry** – Offers ample storage with a stylish contrast between upper and lower cabinets.
- ☑️ **Quartz Countertops & Large Island** – Provides plenty of prep space, seating, and an elegant focal point.
- ☑️ **All Appliances Included** – Featuring a **stove, refrigerator, microwave, and dishwasher** for convenience.
- ☑️ **Walk-In Pantry** – Extra storage for an organized and clutter-free kitchen.

🛏️ Bedrooms & Bathrooms:

- ☑️ **Spacious Master Suite** – A relaxing retreat with a **large walk-in closet and a private en-suite bathroom**.
- ☑️ **Well-Appointed Bathrooms** – Featuring **sleek vanities, premium countertops, and modern fixtures**.
- ☑️ **Three Additional Bedrooms** – Perfect for family, guests, or a home office.
- ☑️ **Dedicated Laundry Room** – Providing extra storage and functionality.

Next-Gen Suite – Private & Versatile Living Space

The **Next-Gen Suite** in the **Allee Model** is a **self-contained 2-bedroom, 1-bathroom living space** designed for **multi-generational living, guests, or rental income opportunities**. With a **private entrance**, a **fully equipped kitchenette**, and its own **laundry area**, this space provides both **independence and convenience**.

Key Features:

- ☑️ **Private Entrance** – Ensures separate access for enhanced privacy and flexibility.
- ☑️ **Spacious Living & Dining Area** – Open-concept layout with wood-look flooring and ample natural light.
- ☑️ **Fully Equipped Kitchenette** – Includes **custom cabinetry, modern countertops, refrigerator, electric range, and ample storage**.
- ☑️ **Two Comfortable Bedrooms** – Designed for relaxation, with stylish finishes and spacious closets.
- ☑️ **Full Bathroom** – Features sleek modern finishes for a comfortable and functional space.
- ☑️ **Private Laundry Room** – Dedicated washer and dryer connections for added convenience.
- ☑️ **Outdoor Access** – Sliding glass doors lead to a **private lanai**, perfect for fresh air and relaxation.

This **Next-Gen Suite** is ideal for **aging parents, adult children, guests, or even as a potential rental space** to generate extra income. The **Allee Model** offers the perfect blend of privacy and connectivity, making it a smart investment for today's homeowners.

