

# Holly Model

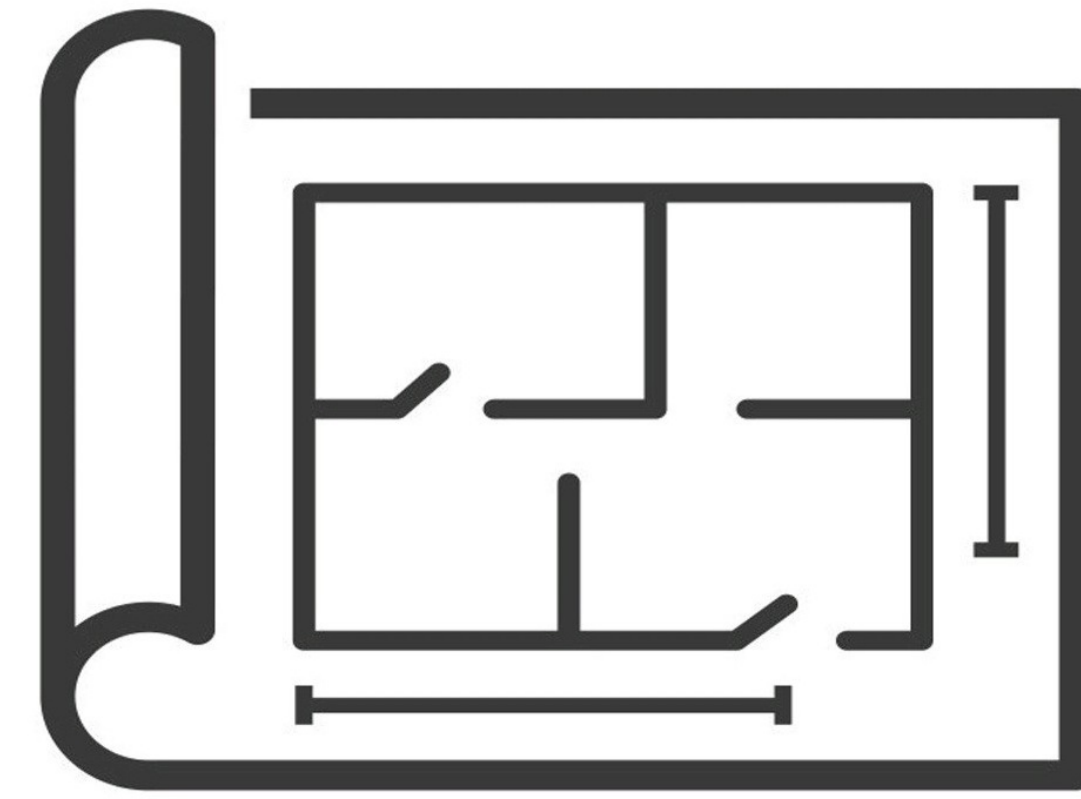
Modern & Efficient Living

1,442 Sq. Ft. | 3 Bedrooms | 2 Bathrooms | 1-Car Garage |  
Starting at \$314,999

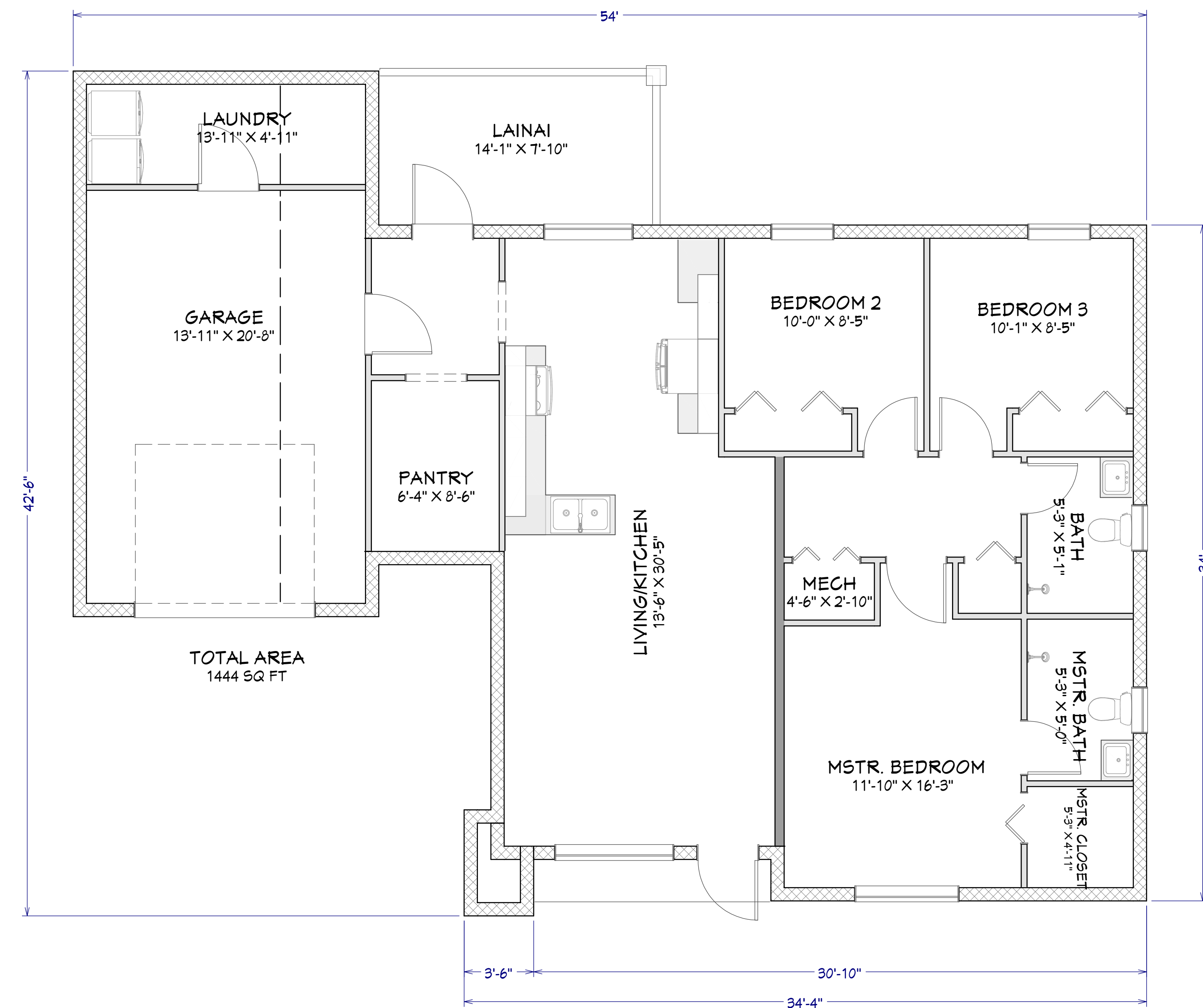
The **Holly Model** is a thoughtfully designed, modern single-family home that blends contemporary aesthetics with functionality. With **1,442 square feet** of living space, this home offers an open-concept layout, maximizing comfort and efficiency.

## Key Features:

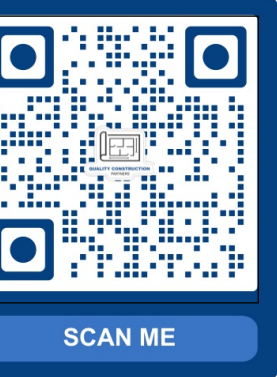
- **Spacious Open-Concept Living & Kitchen:** A seamless flow between the kitchen and living area creates an inviting space for family gatherings and entertaining.
- **Three Comfortable Bedrooms:** The master suite includes an ensuite bathroom and walk-in closet, while two additional bedrooms share a well-appointed full bathroom.
- **Modern Kitchen with Pantry:** Ample storage and counter space for culinary enthusiasts.
- **Indoor-Outdoor Living:** A covered **lanai** provides a relaxing outdoor retreat.
- **Convenient Laundry Room:** Located near the garage for easy access.
- **One-Car Garage & Driveway:** Secure parking with additional storage space.
- **Stylish Exterior:** A sleek, modern façade with a combination of clean lines, contrasting textures, and energy-efficient windows.



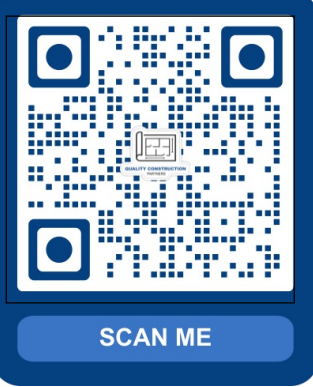
## QUALITY CONSTRUCTION PARTNERS



FLOOR PLAN VIEW SHELL  
1/4 IN = 1 FT







SCAN ME

DRAWINGS PROVIDED BY:  
QUALITY CONSTRUCTION PARTNERS  
746 Bahama Ave S Lehigh Acres, FL 33974  
Admin@qcpbuilders.com

DATE:

3/17/2025

SCALE:

SHEET:

P-2



**Key Features:**

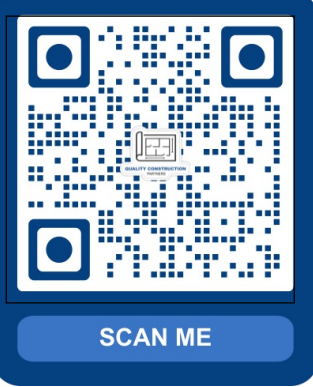
- Open-Concept Living & Kitchen – Spacious layout perfect for gatherings
- Master Suite – Private bathroom and walk-in closet
- Premium Laminated Flooring – Durable and stylish throughout the home
- Modern Kitchen with Pantry – Ample storage and workspace
- Covered Lanai – Enjoy outdoor relaxation
- Convenient Laundry Room – Easy access near the garage
- 1-Car Garage & Driveway – Secure parking with storage space

- HVAC System – High-performance central air and heating

**Included Appliances:**

- Refrigerator – Energy-efficient stainless steel
- Electric Range with Oven – Modern design with multiple settings
- Microwave – Built-in for convenience
- Dishwasher – Stainless steel, high-efficiency model
- Water Heater – Energy-saving unit





SCAN ME

DRAWINGS PROVIDED BY:  
QUALITY CONSTRUCTION PARTNERS  
746 Bahama Ave S Lehigh Acres, FL 33974  
Admin@qcpbuilders.com

DATE:

3/17/2025

SCALE:

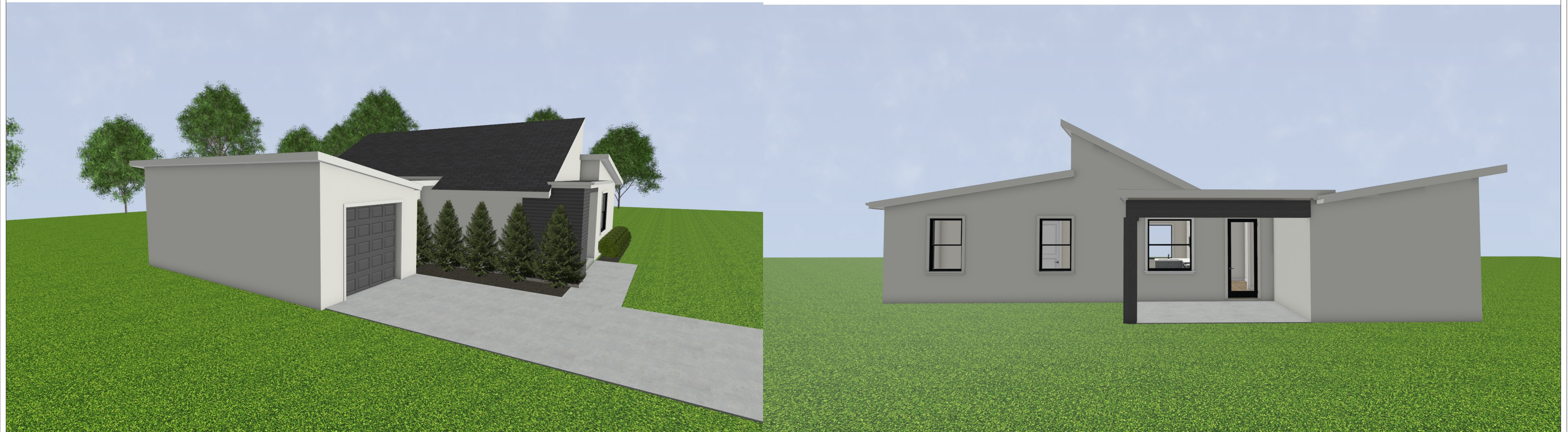
SHEET:

P-3

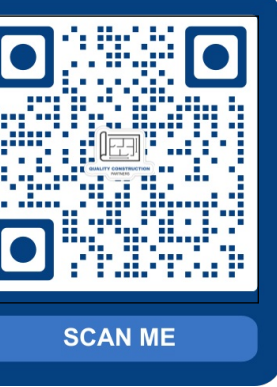
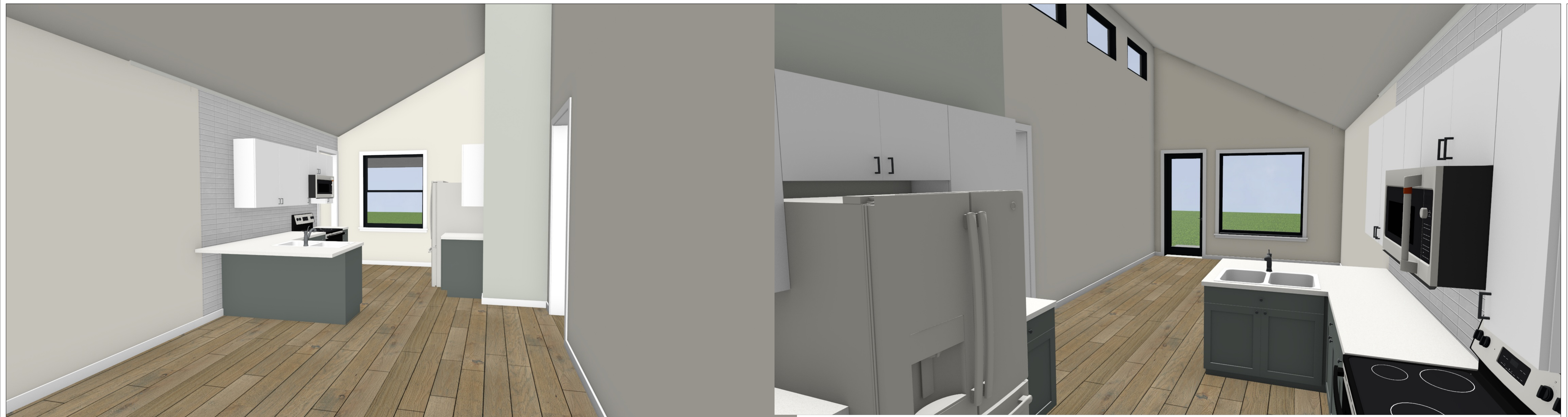


**Exterior Features:**

- **Modern Architectural Design** – Clean lines with a unique, stylish roof structure
- **Durable Stucco Finish** – Sleek and weather-resistant exterior
- **Contrasting Accents** – Contemporary blend of light and dark tones for curb appeal
- **Large Energy-Efficient Impact Windows** – Allow for ample natural light, reduced energy costs, and enhanced storm protection
- **Landscaped Front Yard** – Low-maintenance greenery and a welcoming entrance
- **Spacious Driveway** – Provides additional parking space







**Interior Features:**

- **Vaulted Ceilings** – Expansive height creates a sense of space and sophistication
- **Stylish Kitchen Design** – Modern cabinetry, tiled backsplash, and a functional breakfast bar
- **Luxury Bathroom Finishes** – Tiled shower with accent flooring and high-end fixtures
- **Energy-Efficient Impact Windows** – Maximizing natural light while reducing energy costs
- **Open-Concept Layout** – Seamless connection between living, dining, and kitchen areas

