



Holly Model

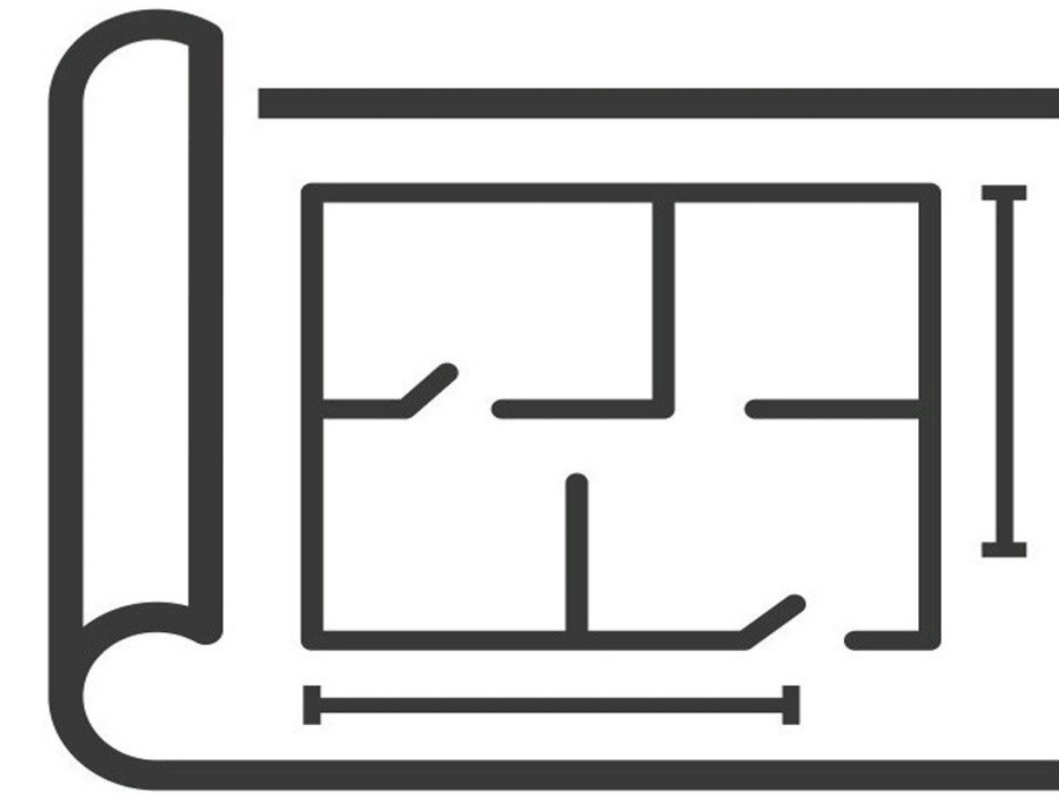
Modern & Efficient Living

1,740 Sq. Ft. | 3 Bedrooms | 2 Bathrooms | 1-Car Garage

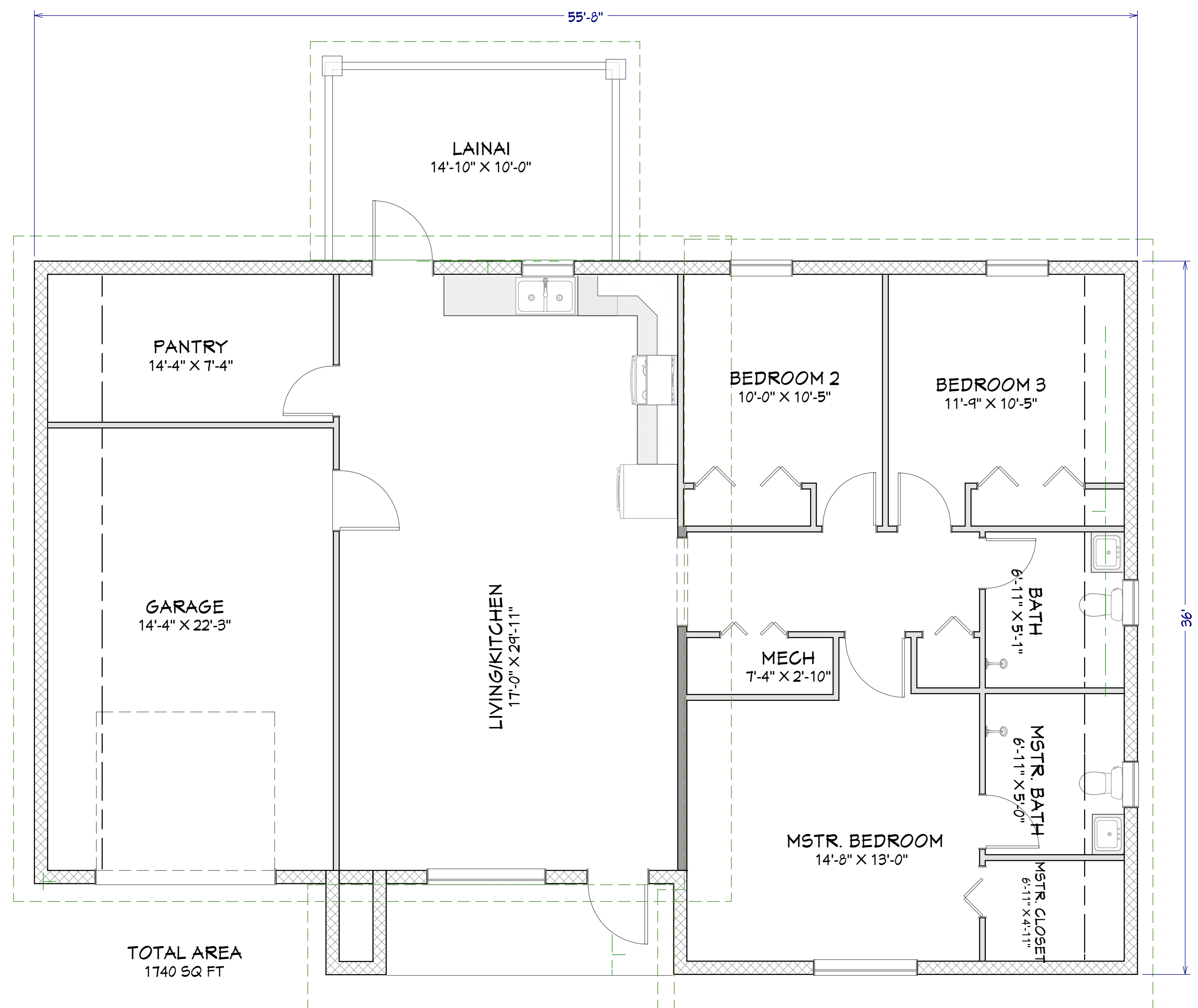
The **Holly Model** is a thoughtfully designed, modern single-family home that blends contemporary aesthetics with functionality. With **1,740 square feet** of living space, this home offers an open-concept layout, maximizing comfort and efficiency.

Key Features:

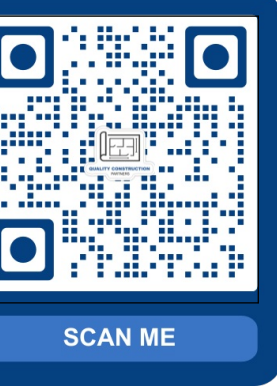
- **Spacious Open-Concept Living & Kitchen:** A seamless flow between the kitchen and living area creates an inviting space for family gatherings and entertaining.
- **Three Comfortable Bedrooms:** The master suite includes an ensuite bathroom and walk-in closet, while two additional bedrooms share a well-appointed full bathroom.
- **Modern Kitchen with Pantry:** Ample storage and counter space for culinary enthusiasts.
- **Indoor-Outdoor Living:** A covered lanai provides a relaxing outdoor retreat.
- **Convenient Laundry Room:** Located in the pantry for easy access.
- **One-Car Garage & Driveway:** Secure parking with additional storage space.
- **Stylish Exterior:** A sleek, modern façade with a combination of clean lines, contrasting textures, and energy-efficient windows.



QUALITY CONSTRUCTION PARTNERS



FLOOR PLAN VIEW SHELL
1/4 IN = 1 FT





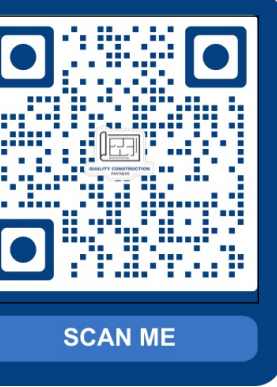
Key Features:

- **Open-Concept Living & Kitchen – Spacious layout perfect for gatherings**
- **Master Suite – Private bathroom and walk-in closet**
- **Premium Laminated Flooring – Durable and stylish throughout the home**
- **Modern Kitchen with Pantry – Ample storage and workspace**
- **Covered Lanai – Enjoy outdoor relaxation**
- **Convenient Laundry Room – Easy access near the garage**
- **1-Car Garage & Driveway – Secure parking with storage space**

-
- **HVAC System – High-performance central air and heating**

Included Appliances:

- **Refrigerator – Energy-efficient stainless steel**
- **Electric Range with Oven – Modern design with multiple settings**
- **Microwave – Built-in for convenience**
- **Dishwasher – Stainless steel, high-efficiency model**
- **Water Heater – Energy-saving unit**



SCAN ME

DRAWINGS PROVIDED BY:
 QUALITY CONSTRUCTION PARTNERS
 746 Bahama Ave S Lehigh Acres, FL 33974
 Admin@qcpbuilders.com

DATE:

6/22/2025

SCALE:

SHEET:

P-2